



MATERIALS

Caron® Simply Soft® (6 oz/170 g; 315 yds/288 m)

Contrast A Lavender Blue (9756) **2 balls**

Contrast B Off White (9702) **1 ball**

or

Contrast A Fuchsia (9764) **2 balls**

Contrast B Dark Country Blue (9711) **1 ball**

or

Caron® Simply Soft® Tweeds™ (5 oz/141 g; 250 yds/228 m)

Contrast A Off White Tweeds (23001) **2 balls**

Contrast B Taupe Tweeds (23003) **1 ball**

Size U.S. H/8 (5 mm) crochet hook **or size needed to obtain gauge.**



CROCHET | SKILL LEVEL: **INTERMEDIATE**

ABBREVIATIONS

Approx = Approximate(ly)

Ch = Chain

Cont = Continue

Dc = Double crochet

Rep = Repeat

RS = Right side

Sc = Single crochet

Sl st = Slip stitch

Sp = Space

WS = Wrong side

MEASUREMENTS

Approx 70" [178 cm] wide x 30" [76 cm] deep.

GAUGE

13 sc and 14 rows = 4" [10 cm].

INSTRUCTIONS

Note: Ch 3 at beg of row counts as dc throughout.

With A, ch 4. Join with sl st to first ch to form ring. See diagram on page 3.

1st row: (RS). Ch 3. (5 dc. Ch 2. 6 dc) in ring. Turn.

2nd row: Ch 3. 2 dc in first dc. 1 dc in each of next 5 dc. (2 dc. Ch 2. 2 dc) in center ch-2 sp. 1 dc in each of next 5 dc. 3 dc in last dc. Turn.

3rd row: Ch 3. 2 dc in first dc. Ch 2. Skip next 2 dc. 1 dc in each of next 3 dc. Ch 2. Skip next 2 dc. 1 dc in each of next 2 dc. (2 dc. Ch 2. 2 dc) in center ch-2 sp. 1 dc in each of next 2 dc. Ch 2. Skip next 2 dc. 1 dc in each of next 3 dc. Ch 2. Skip next 2 dc. 3 dc in top of ch 3. Turn.

4th row: Ch 3. 2 dc in first dc. (1 sc in next dc. Skip next dc. 5 dc in next ch-2 sp. Skip next dc) twice. 1 sc in next dc. Skip next dc. 1 dc in next dc. (2 dc. Ch 2. 2 dc) in center ch-2 sp. 1 dc in next dc. (Skip next dc. 1 sc in next dc. Skip next dc. 5 dc in next ch-2 sp) twice. Skip next dc. 1 sc in next dc. 3 dc in top of ch 3. Turn.

5th row: Ch 3. 2 dc in first dc. 1 dc in next dc. *Ch 3. Skip next (1 dc. 1 sc. 1 dc). 1 dc in each of next 3 dc.** Rep from * once

more. Ch 3. Skip next (1 dc. 1 sc. 1 dc). 1 dc in next dc. Skip next dc. (2 dc. Ch 2. 2 dc) in center ch-2 sp. Skip next dc. 1 dc in next dc. Rep from * to ** twice. Ch 3. Skip next (1 dc. 1 sc. 1 dc). 1 dc in next dc. 3 dc in top of ch 3. Turn.

6th row: Ch 3. 2 dc in first dc. *Skip next dc. 1 sc in next dc. Skip next dc. 5 dc in ch-3 sp. Rep from * twice more. Skip next dc. 1 sc in next dc. Skip next dc. (2 dc. Ch 2. 2 dc) in center ch-2 sp. Skip next dc. **1 sc in next dc. Skip next dc. 5 dc in next ch-3 sp. Skip next dc. Rep from ** twice more. 1 sc in next dc. Skip next dc. 3 dc in top of ch 3. Turn.

7th row: Ch 3. 2 dc in first dc. 1 dc in next dc. *Ch 3. Skip next (1 dc. 1 sc. 1 dc). 1 dc in each of next 3 dc.* Rep from * to * twice more. Ch 3. Skip next (1 dc. 1 sc. 1 dc). 1 dc in next dc. (2 dc. Ch 2. 2 dc) in center ch-2 sp. 1 dc in next dc. Rep from * to * 3 times. Ch 3. Skip next (1 dc. 1 sc. 1 dc). 1 dc in next dc. 3 dc in top of ch 3. Turn.

8th row: Ch 3. 2 dc in first dc. *Skip next dc. 1 sc in next dc. Skip next dc. 5 dc in next ch-3 sp.* Rep from * to * 3 times more. Skip next dc. 1 sc in next dc. Skip next dc. (2 dc.

Ch 2. 2 dc) in center ch-2 sp. Rep from * to * 4 times. Skip next dc. 1 sc in next dc. Skip next dc. 3 dc in top of ch 3. Turn.

9th row: Ch 3. 2 dc in first dc. 1 dc in next dc. *Ch 3. Skip next (1 dc. 1 sc. 1 dc). 1 dc in each of next 3 dc.* Rep from * to * 3 times more. Ch 3. Skip next (1 dc. 1 sc. 1 dc). 1 dc in next dc. (2 dc. Ch 2. 2 dc) in center ch-2 sp. 1 dc in next dc. Rep from * to * 4 times. Ch 3. Skip next (1 dc. 1 sc. 1 dc). 1 dc in next dc. 3 dc in top of ch 3. Turn.

10th row: Ch 3. 2 dc in first dc. *Skip next dc. 1 sc in next dc. Skip next dc. 5 dc in next ch-3 sp.* Rep from * to * 4 times more. Skip next dc. 1 sc in next dc. Skip next dc. (2 dc. Ch 2. 2 dc) in center ch-2 sp. Rep from * to * 5 times. Skip next dc. 1 sc in next dc. Skip next dc. 3 dc in top of ch 3. Turn.

11th row: Ch 3. 2 dc in first dc. 1 dc in next dc. *Ch 3. Skip next (1 dc. 1 sc. 1 dc). 1 dc in each of next 3 dc.* Rep from * 4 times more. Ch 3. Skip next (1 dc. 1 sc. 1 dc). 1 dc in next dc. (2 dc. Ch 2. 2 dc) in center ch-2 sp. 1 dc in next dc. Rep from * to * 5 times. Ch 3. Skip next (1 dc. 1 sc. 1 dc). 1 dc in next dc. 3 dc in top of ch 3. Turn.

12th row: Ch 3. 2 dc in first dc. *Skip next dc. 1 sc in next dc. Skip next dc. 5 dc in next ch-3 sp.* Rep from * to * 5 times more. Skip next dc. 1 sc in next dc. Skip next dc. (2 dc. Ch 2. 2 dc) in center ch-2 sp. Rep from * to * 6 times. Skip next dc. 1 sc in next dc. Skip next dc. 3 dc in top of ch 3. Turn.

Cont as established, working one more rep every other row at each side of center ch-2 sp, until long straight edge measures approx 58" [147.5 cm], ending on a WS row. Break A, join B.

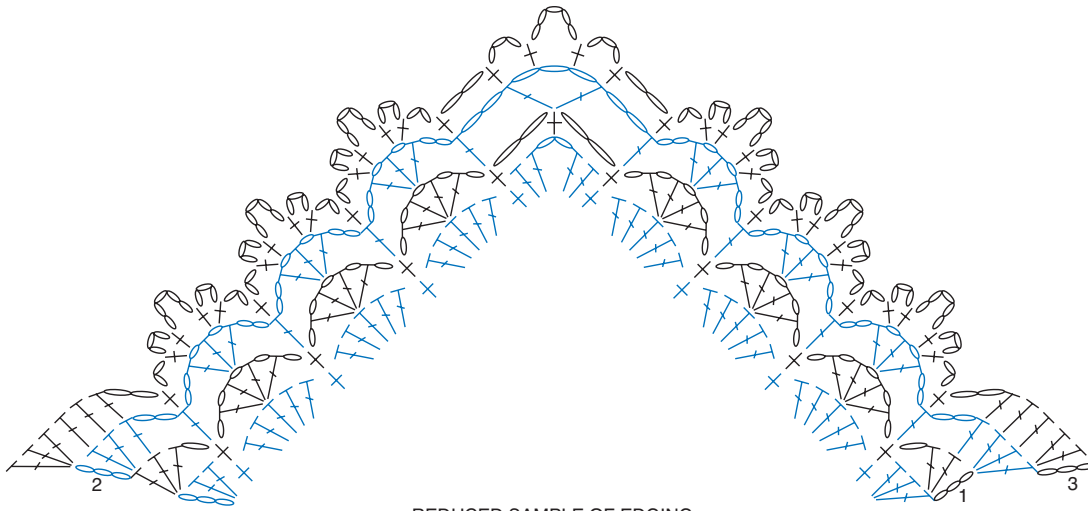
Edging: See diagram on page 3.
1st row: (RS). Ch 3. 2 dc in first dc. Ch 1. *Skip next 2 dc. 1 sc in next sc. Ch 1. Skip next 2 dc. (1 dc. Ch 1) 4 times in next dc. Ch 1.* Rep from * to sc before center ch-2 sp. 1 sc in next sc. Ch 2. Skip next 2 dc. 1 sc in center ch-2 sp. Ch 2. Rep from * to ** to last sc. 1 sc in next sc. Ch 1. Skip next 2 dc. 3 dc in top of ch 3. Turn.

2nd row: Ch 3. 2 dc in first dc. 1 dc in next dc. Skip next dc. *Ch 2. 1 dc in next sc. Ch 2. Skip next (1 dc. Ch 1. 1 dc). [(1 dc. Ch 1) twice. 1 dc] in next ch-1 sp.**

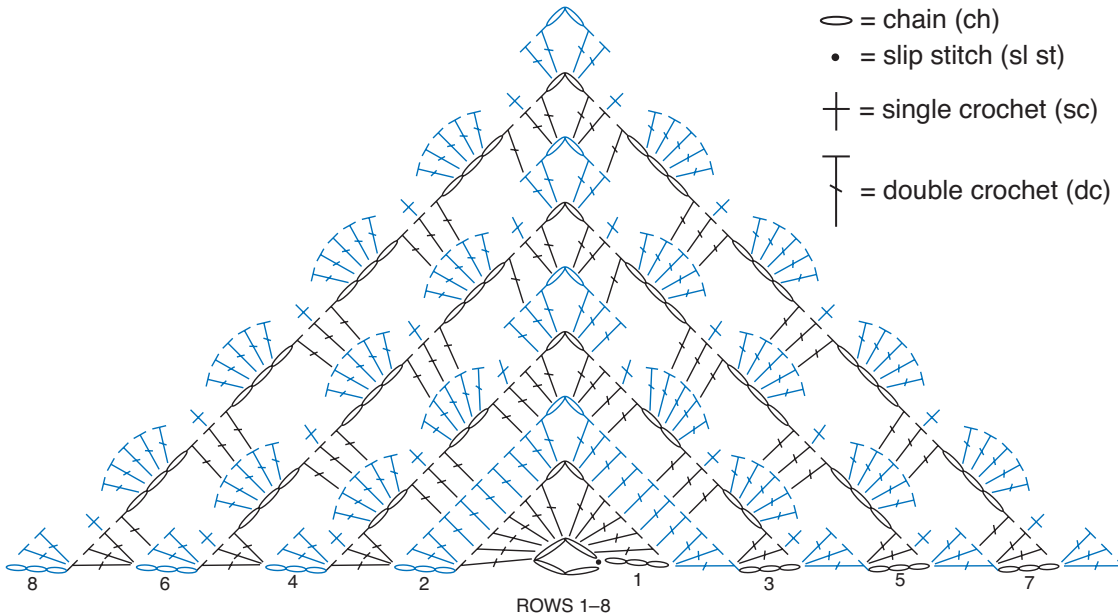
Rep from * to sc before center sc. Ch 2. 1 dc in next sc. Ch 2. (1 dc. Ch 3. 1 dc) in center sc. Rep from * to ** to last sc. Ch 2. 1 dc in next sc. Ch 2. Skip next dc. 1 dc in next dc. 3 dc in top of ch 3. Turn.

3rd row: Ch 3. 2 dc in first dc. 1 dc in each of next 3 dc. *Ch 2. 1 sc in next dc. Ch 2. (1 sc. Ch 3. 1 sc) in next ch-1 sp. Ch 5. Skip next dc. (1 sc. Ch 3. 1 sc) in next ch-1 sp.** Rep from * to dc before center ch-3 sp. (Ch 2. 1 sc in next dc) twice. Ch 3. (1 sc. Ch 5. 1 sc) in ch-3 sp. Ch 3. 1 sc in next dc. Rep from * to ** to last (Ch 2. 1 dc. Ch 2). Ch 2. 1 sc in next dc. Ch 2. 1 dc in each of next 3 dc. 3 dc in top of ch 3. Fasten off.





REDUCED SAMPLE OF EDGING



ROWS 1-8

- STITCH KEY
- = chain (ch)
 - = slip stitch (sl st)
 - + = single crochet (sc)
 - ⌋ = double crochet (dc)

